

“IT’S CANCER.” NOW WHAT?

Whether you’ve just heard those words or you’re going through treatment, cancer has probably turned your world upside down. We get it.

CANTEEN



Getting the right information, advice, and support can really help. Canteen is here to support you. We can help you manage changing dynamics, provide individual support, and connect you with other rangatahi who understand what you're going through.



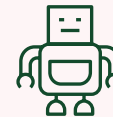
We provide services and programmes specifically for rangatahi dealing with a cancer diagnosis:



Peer support: connect with other rangatahi who understand what you're going through and have a break from cancer at our peer support events organised by our Youth Workers.



Individual Support Sessions: access free and confidential individual support and therapy. Our team are specially trained to support you with the challenges you're facing.



Robots Project: developed to help you stay connected to your education and peers if you're undergoing treatment. Using remotely controlled devices (robots) and video conferencing technology. [canteen.org.nz/rangatahi support/robots](https://canteen.org.nz/rangatahi-support/robots)



Canteen Connect: an online community where you can connect with other rangatahi going through similar stuff, join online events, or chat to a Canteen Connect counsellor. canteenconnect.org.nz



Rangatahi Development Grant: a financial grant you can apply for that aims to support you to grow and thrive. There is an application intake every quarter and a select committee decides the recipients.



AYA CANCER
NETWORK
AOTEAROA

Canteen works with the Adolescent and Young Adult (AYA) Cancer Network Aotearoa. AYA Cancer Network Aotearoa provides strategic direction and clinical leadership of AYA cancer care in Aotearoa. The goal of the Network is to ensure all rangatahi have equal access to the best cancer care available. ayacancernetwork.org.nz.

CANTEEN AOTEAROA

Rangatahi don't have to face cancer alone. Canteen is a safe space for rangatahi aged 13-24 to connect, share the tough stuff, and get a break from cancer when they need it.

CANTEEN

canteen.org.nz
0800 226 8336
info@canteen.org.nz